

Content

- SIKORA is upcoming world champion 2
- X-RAY 2000 for more quality 2
- Lump detection with LUMP 2000 3
- Processor system REMOTE 2000 3
- New service office in Paris 4
- New office in Turkey 4



4 Two world champions:
Harald Sikora and
Harry Prunk



The X-RAY 2120 helps
to save costs



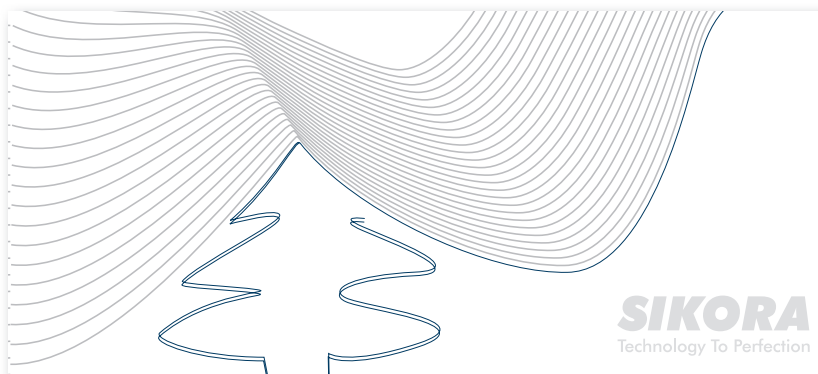
Lumps clearly displayed:
REMOTE 2000

SIKORA is the spearhead of the german medium-sized business

Dear reader,

The holiday season is approaching and a new year will soon begin. This is the time to look back to the past.

ameters from 50 – 300 mm). In particular we are proud of the market launch of our smallest



SIKORA wishes happy holidays

For us the year 2008 was shaped by great success. In August this year we have produced the 500th X-RAY 8000 NXT and further expanded our leading market position in the segment for X-Ray measuring devices for CV-lines. At the Wire we presented numerous new developments on a 192 sqm booth, on two floor levels. Among these were the CENTERVIEW 8000 (for an 8-point-eccentricity, 4-point diameter and 8-point ovality measurement) as well as the new gauge heads LASER 2003 (for smallest measuring ranges from 0.05 – 3 mm) and the LASER 2300 XY (for product di-

display and control system ECOCONTROL 600: The clear display of the measuring values as well as the precise control in automatic mode have impressed many customers worldwide.

Moreover, we have strengthened our strategic company locations with expansion. The opening of additional service offices in Egypt and France contribute to a strong global customer service. Besides the service offices, our sales offices have also expanded. SIKORA ASIA has set up a new office in Suzhou and is serving customers from two

locations now: Fuzhou in the south east of China, Suzhou close to Shanghai. The American market, represented by our office SIKORA INTERNATIONAL CORP, added more space for administration, warehouse and service in June of this year. Furthermore, we are happy about a new sales office in Istanbul/ Turkey, which will be managed by Mrs. Ajda Sarigülle beginning January 1st 2009.

The broad public is paying more attention to our company. Just recently, SIKORA AG has been placed 18th in an article of the „Handelsblatt“ under the title “Exclusive ranking of the fastest growing medium businesses – Germany’s upcoming world champions”.

All these are tremendous events and achievements, however would not be possible without the affiliation of our customers and partners. We thank you for your loyalty and confidence. We wish you and your family happy holidays as well as a good start for a happy and successful New Year.

Enjoy reading,

Best regards,

Harald Sikora

Harald Sikora

Harry Prunk

Harry Prunk

SIKORA is the upcoming world champion

SIKORA belongs to the fastest growing medium-sized companies in Germany

SIKORA belongs to the fastest growing medium-sized companies in Germany. The SIKORA AG ranks 18th among the 100 future medium-sized world market leaders in Germany, as determined by economy professor Bernd Venohr. Under the title "Exclusive ranking of the fastest growing medium-sized companies – Germany's upcoming world champions" Prof. Venohr made the evaluation for the Handelsblatt, Handelsblatt.com and Wiwo.de. The nomination of the 100 fastest growing German world market leaderships resulted from a comprehensive data base. The following criteria were used for the selection: The compa-



Harald Sikora and Harry Prunk are the head of SIKORA AG

ny belongs worldwide to the top three or is leading in Europe. The turnover was below 50 million euros in 2005 and has increased by at least ten percent annually in the last 3 years. The companies

had no influence on the analysis and the result. SIKORA AG thus joins the top league of the classic medium-sized companies.

X-RAY 2000: Innovation for the future

Economic X-Ray measuring device for diameter, eccentricity and wall thickness measurement

Worldwide today, there is an increasing demand for reliable measurement and control of the insulation wall thickness and eccentricity at cable production lines.

With the X-RAY 2000 SIKORA presents a very interesting generation of X-Ray measuring systems, where the cable is transilluminated by X-rays. Accurate measuring values are continuously available within fractions of a second, which allows for a fast centering of the crosshead and a continuous measurement and control of the extrusion line in consideration of the minimum values. The measuring axes are arranged under 0, 90, 180 and 270°-position. The system is easily integrated into every insulating and jacketing line and very well suitable for measurement of foamed products.



The X-RAY 2000 helps to save costs

For this application besides the eccentricity the degree of the foaming and the radial distribution of the foaming is displayed.

The measuring values of the X-RAY 2000, i.e. diameter, ovality, wall thickness and eccentricity, are displayed numerically and graphically on the processor system ECOCONTROL 2000.

The system is operated intuitively via a 15"-TFT-color monitor touch screen. In the case of eccentricity, the wall thickness is shown as an eccentric ring. The position of the thinnest wall insulation is marked in color. As standard, the X-RAY 2000 has a statistical function for analyzing the measured results in a length or time-related trend diagram (with a zoom function) and is combined with a chart showing the distribution of the single values (statistical distribution curve). The X-RAY 2000 provides the highest potential for savings in respect to material over-consumption and start-up scrap.

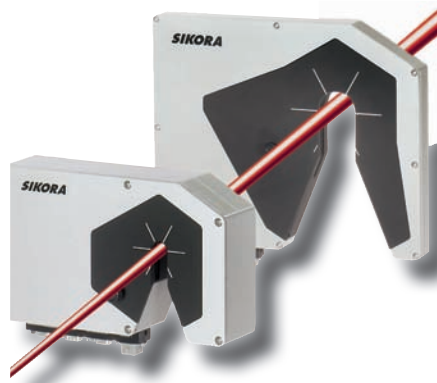
No chance for lumps

Reliable lump detection thanks to SIKORA's LUMP 2000

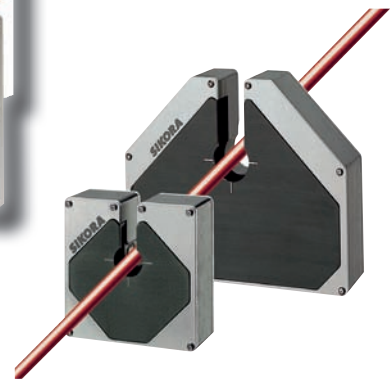
With the LUMP 2000-series SIKORA takes spectacular dimensions for the detection of lumps and neckdowns in two or three measuring planes. The heart of the LUMP 2000-devices is advanced double sensor technology. The systems detect punctual non-conformities in the product surface even at a line speed of up to 3000 m/min. The outcome of this technology is a precise fault detection and analysis for the smallest non-conformities of 0.01 mm. Simultaneously, the lump detectors stand out for highest reliability and comprehensive functionality. The XY-gauge heads are suitable for product diameters from 0.25 to 10 mm and 0.5 to 25 mm. Moreover, SIKORA provides 3-axis models for product diameters from 0.25 to 10 mm and 0.5 to 35 mm. The most striking quality of the T-devices is the sophisticated design.

The gauge heads are open at the bottom to prevent the measuring plane from collecting dirt or water, also allowing for easy movement of the gauge head up and out of the extrusion line. For the detection of bigger, non-punctual or non-circular faults (bamboo rings) the LUMP 2000 XY models are available.

In particular, the three-axis measuring principle of the LUMP 2000 T systems set technological standards. Punctual faults are detected with a constant high probability.



LUMP 2000 T-models



LUMP 2000 XY-models

Profitability for your production line

REMOTE 2000: Classic display and control device

Besides the future-oriented measuring and test devices SIKORA also offers compatible display and control systems. The REMOTE 2000 is an advanced

processor-based display and control unit for wire and cable production lines. As a decentralized device it is universally applicable to all SIKORA diameter measuring systems (LASER 2000 XY, LASER 2000 T, LED 8025 XY) as well as the 2- and 3-axis lump detectors of the LUMP 2000-series and the SPARK 2000 for the selection of the test voltage. Furthermore, REMOTE 2000 is suitable for panel mounting or for installation on the gauge head support. The display of the measuring values is on a five-digit, 20 mm high clear LED-display. For applications requiring continuous automatic control of the line speed or the extruder rpm the

REMOTE 2000 is offered with the control module SET POINT. Optionally, a length-related record of the measuring values as well as statistical data is available.

The REMOTE 2000 provides an interface, to support a connection to an external PC for data gathering or PLC line control operations. Optionally, this port supports the report printer. To increase operator ease of use, a product library is available for the REMOTE 2000 for up to 50 cable types. Nominal values and tolerances can easily be recalled for the control of the line.



REMOTE 2000

SIKORA AG further on the course of expansion

New service office in Paris

With a new service office in Paris, SIKORA has further expanded its presence in Europe.

The office, under the direction of Jérôme Charbonnel, has been opened due to the increasing number of customers in the strategically important French market. Since 1995 SIKORA has been successfully collaborating with the representative S.O.C.E. OXYCOM in France, which is directed by Mr. Gérard Fraenkel, and has been able to develop a broad customer base in recent years. The manufacturer of measuring

and control devices for the wire, cable, hose and tube sector continues its company strategy of nationwide presence and customer proximity with the new service base, which is also located in the building of S.O.C.E. OXYCOM.

The SIKORA strategy is based on the setting up of service offices worldwide, which specifically cater to customer needs and ensure fast support and service on site. "France is an important market for us, as many cable manufacturers in the branches of communication, automotive, energy, and in-

stallation have their base there. In particular in the hose and tube segment we aim to further strengthen our presence and to convince customers of our first-class measuring and control systems", says Harry Prunk, Chairman of SIKORA AG. "With a service office on site and the representative S.O.C.E. OXYCOM we can service our customers even more intensively and further expand our market position in France", concludes Prunk.

New sales office in Istanbul/Turkey

SIKORA AG will open a new sales office in Istanbul/Turkey by January 1st 2009. This ninth sales location contributes to the increasing demand for its innovative measuring systems.

With the new office in Istanbul, SIKORA is able to react faster to customer requests and to further expand its business in Turkey.

SIKORA has been working very successfully with the International Trade Consultancy (ITC) since July 1997 and follows the extremely positive business development in the Turkish market with setting up its own office. "We are proud to announce the forthcoming opening of an additional office in Turkey", says Harry Prunk, Chairman of SIKORA AG. Head of the SIKORA office in Istanbul is Ajda Sarigülle.

After an intensive 6-months training in Bremen, Mrs. Sarigülle, who has great experience in the field of administration and sales, will move to the new office at the end of this year.



Ajda Sarigülle is the sales manager of SIKORA TÜRKIYE

SIKORA

Technology To Perfection

SIKORA EXTRA

Editor:

SIKORA AG

Bruchweide 2 • 28307 • Bremen/ Germany

Tel. +49 (421) 48900-0

Fax +49 (421) 48900-90

Internet www.sikora.net

E-Mail sales@sikora.net

communications@sikora.net

SIKORA ASIA

Fuzhou, P.R. China • sales@sikora-asia.com

SIKORA BRASIL

São Paulo, Brazil • sales@sikora-usa.com

SIKORA FRANCE

Paris, France • sales@sikora-france.com

SIKORA INDIA

New Delhi, India • sikoraindia@gmail.com

SIKORA ITALIA

Vicenza, Italy • sales@sikora-italia.com

SIKORA KOREA

Seoul, Korea • sikora@chol.com

SIKORA RUSSIA

Moscow, Russia • sales@sikora-russia.com

SIKORA TÜRKIYE

Istanbul, Turkey • sales@sikora-turkey.com

SIKORA UKRAINE

Vinnitsa, Ukraine • sales@sikora-ukraine.com

SIKORA INTERNATIONAL CORP

Peachtree City, USA • sales@sikora-usa.com